



Tree Towns Reprographics, Inc.

Delivering On-Demand Print Solutions

[www.treetowns.com](http://www.treetowns.com)



## *For Owners*

A guide to understanding how PDM 3.0 will connect your entire business workflow to reduce project costs, mitigate risk and increase profits, with a single, secure resource.



McGraw Hill  
CONSTRUCTION • **ReproMAX**<sup>™</sup>

PARTNERS FOR CONSTRUCTION PROFITABILITY

## Table of Contents

### PDM 3.0 for Owners

Power of Partnership  
Product Overview

The PDM 3.0 Suite of Products  
PDM Plan Room  
PDM Bid Management  
PDM Pro  
PDM Enterprise  
PDM Collaboration

PDM Prequalification  
PDM and the MHC Network-Dodge

PDM and Interoperability  
PDM and BIM  
PDM and LEED  
PDM and Integrated Project Delivery

Product Features Overview

PDM and the ReproMAX Network



**McGraw-Hill Construction** and **ReproMAX** are the world leaders in project information and document management technology and provide the construction industry a secure and accessible collaborative tool called Project Document Manager or "**PDM 3.0**".

**PDM 3.0** is an efficient and sustainable approach to managing project information, contacts and complex documentation through the project lifecycle; from concept to closeout. The result is a more efficient project workflow... to help companies to be more productive, reduce project costs, mitigate risk and increase profits.

**Owners** must perform comprehensive cost and time management during every stage of a project, beginning with the original concept through project closeout. Effectively managing budgets, project relations, and facilities control is critical to meeting project delivery requirements. PDM 3.0 is designed to foster rapid, efficient and accountable communication between Owners, Architects, GCs, Subcontractors and Construction support channels throughout the life of the project.

## PDM 3.0 Overview

The PDM 3.0 suite is an interoperable document management tool designed specifically for construction businesses and professionals, providing efficient management of the entire workflow process—from design through bidding, project management, project close out and operations.

PDM 3.0 is unique in that it provides solutions for managing and organizing project information and documents that is also directly linked to a user branded web portal. PDM 3.0 provides the power of an application and the power of the web in a single system and is integrated with best in class industry solutions, including the McGraw-Hill Construction Network-Dodge.

### Learn More About PDM 3.0

**PDM Plan Room**  
**PDM Bid Management**  
**PDM Pro**  
**PDM Enterprise**  
**PDM Collaboration**

### PDM 3.0 Highlights...

**Contact Management...** your database of vendors is centrally stored and managed for company wide access for research and review

**Prequalification Process...** is streamlined to allow vendors to submit and update their company information online

**Access...** to McGraw-Hill Construction/DODGE & SWEETS project and product databases

**Integration...** with the McGraw-Hill Construction Global Directory

**Bid Management...** tools scaled to fit the requirements of preconstruction for business of all sizes

**Electronic Submittal Management...** reviewed and approved electronically saving valuable time and resources

**Electronic Closeout...** delivers a searchable paperless archive of all project documents that can be accessed anywhere at anytime

**Risk Mitigation and Accountability...** through secure user access and comprehensive document version control

## PDM 3.0 Plan Room

A tool that transfers and organizes project information better and faster from any other PDM system, as well as, the McGraw-Hill Construction Network-Dodge.

Gone are the days of downloading project information and either losing it or forgetting where you saved it. PDM 3.0 Plan Room helps you get information, organize it, use it, and even print it better than before.

**When you need more functionality, PDM 3.0 Plan room is the foundation application that can be easily upgraded to PDM 3.0 Bidding, PDM 3.0 Pro, Enterprise, or Collaboration. PDM 3.0 offers a scalable path that works for you now and in the future as business needs evolve.**

### **Are you a McGraw-Hill Construction Network-Dodge customer?**

PDM 3.0 Plan Room will offer you one-click project synchronization from the McGraw-Hill Construction Network-Dodge. Instantly transfer project information including plans, specs, and addenda from the Dodge project database into your PDM 3.0 Plan room for a better organized project review and bid process.

PDM 3.0 Plan Room is targeted to customers who desire project document management functionality, but who are not yet ready to implement or operate a comprehensive, customized solution. PDM 3.0 Plan room is hosted by reprographers who facilitate the creation of the project, contacts and documents and allows customers to interface with reprographers for graphic services.

All project information can be moved from PDM 3.0 Plan Room to any other PDM application. The PDM 3.0 Plan Room is free to end users, but will be used to introduce the benefits of document management services to the GC's project and provide instant upgrade capability to the additional functionality in the PDM 3.0 suite of products.

## PDM 3.0 Bid Management

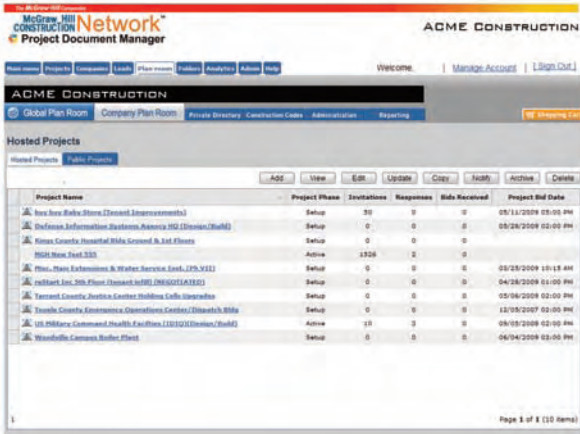
PDM 3.0 provides sophisticated yet easy to use tools that improve the bid process. Prequalify, invite, monitor, and manage your bid process better using PDM 3.0 integrated tools. PDM offers bid management tools that provide easy access to both electronic and printed information during the bid phase.

Managing bids is a required phase of every project. PDM 3.0 offers a bid management solution designed to meet the needs of the most demanding construction professional.

PDM 3.0 offers an integrated approach to bid management. PDM 3.0 combines all of the bidding functions into one application. Managing the entire bid process using a single application helps preconstruction, estimating, and operations all work from the same information.

### PDM 3.0 capabilities include:

- Create bid packages and apply scopes of work
- Prequalify contractors
- Select contractors for bid
- Send out invitation to bid by email and/or fax
- Monitor bid responses and intentions interactively using the PDM 3.0 dashboard
- Accept bids online
- Transfer contacts and projects from the McGraw-Hill Construction Network - Dodge



Project Name	Project Phase	Invitations	Responses	Bids Received	Project Bid Date
Iron Iron Baby Store (Connect. Improvements)	Setup	0	0	0	05/11/2009 03:00 PM
DuPage Information Systems, Aurora HQ (Expansion/Build)	Setup	0	0	0	05/24/2009 02:00 PM
Illinois County Hospital Rehabilitation & 3rd Floor	Setup	0	0	0	
Hill Street School 2337	Active	1326	2	0	
Missouri State University & Weber Service (Ext. J29-V32)	Setup	0	0	0	05/25/2009 10:15 AM
Ballpark Job Site (Market to RFP) (MAGUIA1302)	Setup	0	0	0	04/28/2009 01:00 PM
Tarrant County Justice Center Building Coll. Upgrade	Setup	0	0	0	05/06/2009 02:00 PM
Texas County Emergency Operations Center/Dispatch Bldg	Setup	0	0	0	11/05/2007 02:00 PM
US Military Command Health Facilities (1201201) (Expansion/Build)	Active	18	3	0	09/05/2009 02:00 PM
Woodville Campus, Butler Plant	Setup	0	0	0	06/04/2009 03:00 PM

PDM 3.0 allows all members of the team real-time access to the bid process. Each member of the team will be able to view bid coverage including who is bidding, who is not bidding, and much more. All of this is done from a single dash board view that greatly improves the ability for everyone associated with the bid process to manage and track the bid process.

## PDM 3.0 Pro

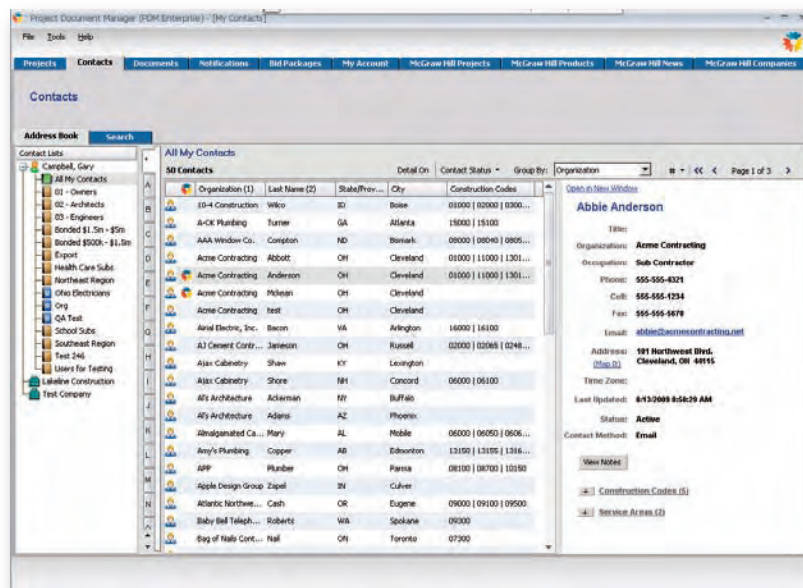
PDM 3.0 Pro is the ideal solution for users who need a more powerful tool to capture, organize, and distribute construction information and documents during the entire project lifecycle.

A powerful application that brings together many of the fragmented processes associated with today's construction project.

**PDM 3.0 Pro incorporates the following features to provide extensive cradle-to-grave project information management:**

- Document Management
- Company Prequalification
- Contractor Evaluation
- Contact Management
- Bid Coordination
- Document Distribution
- Plan Room Access
- Project Closeout

PDM 3.0 Pro will help your organization do more with less by combining these processes into one easy to use application. Multiple functions can be easily managed by one person.

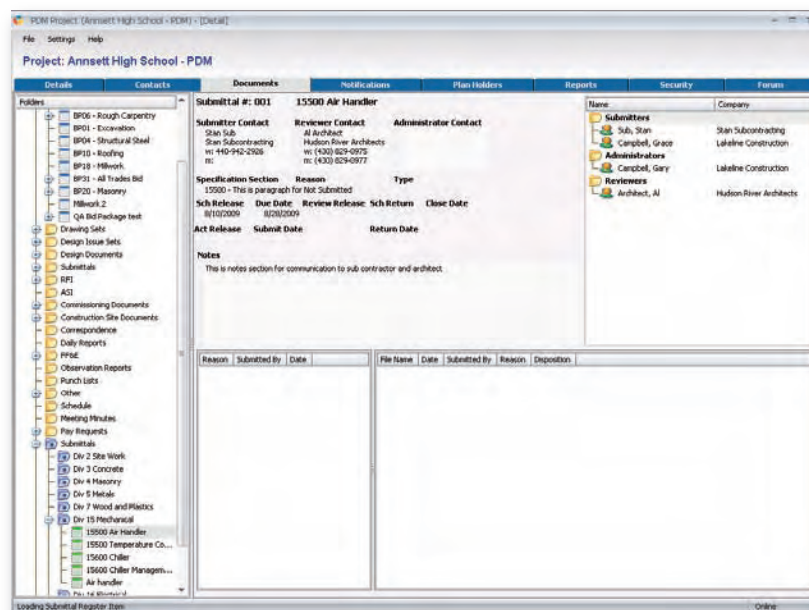


## PDM 3.0 Enterprise

Everything included in the PDM 3.0 Pro system plus the ability to customize features to meet the needs of sophisticated owners and general contractors - construction managers.

PDM 3.0 Enterprise provides users the ability to customize functionality based on unique business requirements. Enterprise customers will work directly with the product developer to build a customized and secure system.

Integration with “best in class” Project Management and Project Portfolio Management software is paramount for a successful cradle-to-grave project workflow. PDM 3.0 Enterprise is your unique way to organize and manage your documents how and when you need them.



## **PDM 3.0 Collaboration**

PDM 3.0 Collaboration is the answer for architects and consultants that need to be a part of the collaborative project effort but do not need the full functionality of Pro or Enterprise.

PDM 3.0 Collaboration offers project participants the ability to upload and share documents electronically. Often times project participants do not need the full functionality of a Pro or Enterprise system yet need more than what PDM 3.0 Plan room offers.

All the PDM 3.0 components will work together. GC's and CM's will need the full functionality of Pro or Enterprise. Architects and consultants will need collaboration licenses. Subcontractors can access the project using PDM 3.0 Plan room. PDM 3.0's flexible and affordable plan will meet the needs of each individual making it a comprehensive solution for everyone involved in the project.

### **The answer is PDM 3.0 Collaboration.**

PDM 3.0 Collaboration is a part of the scalable PDM 3.0 product suite and can be upgraded to either PDM Pro or Enterprise quickly and easily.

## **PDM 3.0 Prequalification**

PDM 3.0 offers an integrated approach to qualifying and managing competent contractors. The PDM 3.0 prequalification tools are specifically built for construction to improve project liability and defaults. PDM 3.0 prequalification directly interfaces with PDM 3.0 bid management tools improving the ability to invite competent contractors to bid. No longer is prequalification a labor and time intensive process.

In addition to cutting cost, a vital requirement on today's construction project is mitigating risk. One way this is accomplished is by using a contractor prequalification process. Traditionally the process involves a project owner or construction firm putting a static form on their website that is downloaded, manually filled out, and faxed or emailed back to the office to be filed.

### **The traditional paper contractor prequalification process is:**

- **Labor intensive**
- **Requires physical storage of paper documents**
- **Difficult and inefficient to share with the entire organization**

PDM 3.0 provides online web based tools to fill out and submit contractor prequalification information directly to the system. This eliminates manual labor by electronically storing and sharing the information with the entire team. PDM 3.0 prequalification offers “out of the box” functionality that meets most if not all of a construction firms needs including the ability for contractors to upload safety sheets, certifications, and other documents important to the prequalification process.

PDM 3.0 improves the prequalification process by offering a sophisticated easy to use application that combines with the power of the web to collect, review, manage, and share prequalification information electronically. PDM 3.0 reduces costs and liability by providing the tools necessary for owners or construction firms to either improve or implement a prequalification process.

## PDM 3.0 & MHC Network

Streamline the bid process by synchronization projects to PDM 3.0 directly from the McGraw-Hill Construction Network - Dodge. Project Document Manager easily integrates with the existing resources and project information from the McGraw-Hill Construction Network-Dodge. With over 600,000 projects reported each year, McGraw-Hill Construction – Dodge is the leading provider of projects news, plans & specifications and market analysis to the construction industry.

**The McGraw-Hill Construction Network will enable you to:**

- **Find ARRA/Stimulus Projects**
- **Automate your service - get email alerts**
- **Identify competitors and key prospects**
- **Get the right projects at the right time**
- **Get personalized training on demand**

Project Document Manager 3.0 (PDM 3.0) provides **General Contractor** teams uploaded or scanned documents – including version control for plans, specifications, addenda, bid packages, RFI's and submittals, and online or offline markup capabilities. As a collaborative tool, PDM 3.0 can organize and route documents electronically to any project member; manage and organize contacts by project, construction code, or any other attribute and it easily integrates with leading project management systems.

Connecting to the McGraw-Hill Construction Network-Dodge from Project Document Manager (PDM) is seamless and will increase your business productivity by 3 days.

- Saving time on data entry allows for increased employee productivity
- PDM 3.0 can manage more scope of work with more project documents than ever before
- Get your ITB out in 4 days as opposed to 7 days

## **PDM 3.0 and BIM**

**The explosion of Building Information Modeling is changing the game for construction. Construction is going to require better collaboration and PDM provides just that.**

PDM 3.0's unique ability to work with nearly any file type make it the perfect tool for coordinating BIM information. From Autodesk Revit models to DWF and PDF bid information the new construction project is going to require better, faster, and accountable document sharing and collaboration.

**Construction is embracing BIM, it is no longer a new design process for architects.** With the introduction of Autodesk Navisworks, which allows construction professionals to virtually build a building before ground is ever broken, BIM use is on the rise. To be successful, the BIM process requires centralized project information that is shared quickly and reliably.

The PDM 3.0 application and the web portal offer powerful tools for centralizing and sharing BIM information. Documents are not proprietary and are kept in their native format. They are then easily uploaded and shared using these PDM 3.0 applications - Pro, Enterprise and Collaboration.

## **PDM 3.0 and IPD**

Integrated Project Delivery is a form of project delivery that integrates people, practices, and business structures to harnesses the talents of all project participants. PDM 3.0 meets these needs by centralizing secure access to all project information.

Integrated Project Delivery - IPD was created to respond to the revolution Building Information Modeling is having on the construction process. As a result of BIM, projects require accountable collaboration between all project participants.

**There are eight main phases to the Integrated Project Delivery method:**

- **Conceptualization phase**
- **Criteria design phase**
- **Detailed Design phase**
- **Implementation Documents phase**
- **Agency Review phase**
- **Buyout phase**
- **Construction phase**
- **Closeout phase**

PDM 3.0's unique set of tools meets the needs for all phases of the IPD process including the ability to provide sophisticated yet easy to use project closeout capability.

## **PDM 3.0 and LEED**

PDM 3.0 offers a sustainable approach to construction documentation by providing efficient access to information both during and after the project. PDM 3.0 not only eliminates wasteful printing, it also reduces the resources required to communicate on paper documents.

### **PDM 3.0 saves time and effort collecting and distributing project information by:**

- **Reducing paper prints**
- **Reducing the need to ship of documents**
- **Reducing travel times to pick up documents**
- **Reducing mistakes with improved information access**

PDM 3.0 also provides important post-construction functionality. Building owners will have easy access to all documents included in the project, organized exactly how the building was designed, bid, and built. This makes the management of facilities easier and more efficient for building owners.

## PDM 3.0 and Interoperability

The PDM 3.0 suite of products works interoperably with many industry leading applications. PDM is an application that works with existing applications.

### On Center On Screen Takeoff

PDM 3.0 offers one click links for transferring documents into your On Screen Takeoff application.

### Meridian Prolog<sup>®</sup> and Proliance<sup>®</sup>

Prolog and Proliance software delivers total project management control for construction projects by automating day-to-day tasks and processes, from project design to close-out.

### Oracle Primavera Contract Management

Primavera offers solutions focused on the mission critical PPM requirements of key vertical industries starting with the construction industry.

### Bluebeam PDF CAD Revu

The document markup and review process is perfectly suited to use Bluebeams affordable PDF CAD Revu product. Documents can be marked up and shared to the PDM 3.0 system.

### Adobe Acrobat<sup>®</sup>

With Adobe Acrobat<sup>®</sup>, your entire team can view and respond as comments are being made – streamlining your reviews and approvals.

For more information how each individual application works with PDM 3.0 please contact **800-393-6343**.



## Product Features Overview

	PDM 3.0 Plan room	PDM 3.0 Pro	PDM 3.0 Enterprise	PDM3.0 Collaboration
Sync projects from PDM systems	<input checked="" type="checkbox"/>	<input checked="" type="checkbox"/>	<input checked="" type="checkbox"/>	<input checked="" type="checkbox"/>
Sync projects from Dodge	<input checked="" type="checkbox"/>	<input checked="" type="checkbox"/>	<input checked="" type="checkbox"/>	<input checked="" type="checkbox"/>
Order printed plans	<input checked="" type="checkbox"/>	<input checked="" type="checkbox"/>	<input checked="" type="checkbox"/>	<input checked="" type="checkbox"/>
User branded web portal	<input checked="" type="checkbox"/>	<input checked="" type="checkbox"/>	<input checked="" type="checkbox"/>	<input checked="" type="checkbox"/>
Subscribe to projects for updates	<input checked="" type="checkbox"/>	<input checked="" type="checkbox"/>	<input checked="" type="checkbox"/>	<input checked="" type="checkbox"/>
Add system contacts		<input checked="" type="checkbox"/>	<input checked="" type="checkbox"/>	
Prequalify contractors		<input checked="" type="checkbox"/>	<input checked="" type="checkbox"/>	<input checked="" type="checkbox"/>
Evaluate contractors		<input checked="" type="checkbox"/>	<input checked="" type="checkbox"/>	<input checked="" type="checkbox"/>
Create document folders		<input checked="" type="checkbox"/>	<input checked="" type="checkbox"/>	<input checked="" type="checkbox"/>
Upload documents		<input checked="" type="checkbox"/>	<input checked="" type="checkbox"/>	
Create bid packages		<input checked="" type="checkbox"/>	<input checked="" type="checkbox"/>	
Send invitation to bid		<input checked="" type="checkbox"/>	<input checked="" type="checkbox"/>	
Bid management and analysis		<input checked="" type="checkbox"/>	<input checked="" type="checkbox"/>	
Monitor planholders		<input checked="" type="checkbox"/>	<input checked="" type="checkbox"/>	
Send project notifications		<input checked="" type="checkbox"/>	<input checked="" type="checkbox"/>	
Create submittal folders		<input checked="" type="checkbox"/>	<input checked="" type="checkbox"/>	
Create submittal items		<input checked="" type="checkbox"/>	<input checked="" type="checkbox"/>	
Submittal management		<input checked="" type="checkbox"/>	<input checked="" type="checkbox"/>	<input checked="" type="checkbox"/>
Submit electronic submittals	<input checked="" type="checkbox"/>	<input checked="" type="checkbox"/>	<input checked="" type="checkbox"/>	
Setup project security and roles		<input checked="" type="checkbox"/>	<input checked="" type="checkbox"/>	
Project closeout		<input checked="" type="checkbox"/>	<input checked="" type="checkbox"/>	
Create and run reports		<input checked="" type="checkbox"/>	<input checked="" type="checkbox"/>	
Search MHC Global Contacts		<input checked="" type="checkbox"/>	<input checked="" type="checkbox"/>	
Customize PDM functionality			<input checked="" type="checkbox"/>	

## PDM 3.0 and ReproMAX

**ReproMAX is the largest organization of privately owned companies dedicated to offering solutions that improve construction efficiencies.**

ReproMAX is the largest reseller chain for the PDM 3.0 product line. With over 200 locations in the US, Canada, and Europe, ReproMAX provides service and support from all corners. ReproMax PDM 3.0 members are certified to sell, host, and support PDM 3.0.

**ReproMAX provides PDM 3.0 support services that include:**

- **PDM 3.0 training and implementation**
- **Same day document distribution**
- **Document quality assurance and indexing services**
- **Document scanning and naming**

The ReproMAX Network works together to make your projects more efficient, better communicated, and on schedule.



**McGraw Hill**  
**CONSTRUCTION** **Network**<sup>®</sup>  
Project Document Manager

